

# IVFtech

For the next generation



## Welcome to the IVFtech Family

Home of customized, quality products since 1998 IVFtech's mission has been to supply and secure the best, customized solutions for your IVF laboratory and providing a secure atmosphere with reliable temperature, humidity, and CO2 equilibrium. To give our customers the best service and quality in everything we do. For the next generation.

We wish to create the best possible reliable and quality products. Our company supports this vision by offering a wide range of well-designed, customized products, with the finest first-rate worldwide service.

We want to provide impeccable and trustworthy products and be recognized as a company of honesty and customer commitment. Be the market leader of customized products, while using our knowledge to inspire and implement solutions for the future of IVF, today.

We work hard every day to make IVFtech the world's most respected IVF brand, by leading the way for high quality customized products, with beautiful design and integrity.

State-of-the-art production facilities, skilled and experienced employees, and standardized workflows ensure the superior quality of IVFtech. Every cabinet, table or any of the products we deliver to our customers fulfill the highest functions and reliability requirements of temperature, humidity, and CO2 equilibrium, and everything can be customized to meet your specific needs.

The use of high-end materials, proven production processes incorporating continuous manufacturing and final tests guarantee a consistently high-quality level. Our streamlined management system with clearly defined workflows, rigorous quality control and the constant challenge to improve our processes are one of the key success factors for our customers' satisfaction.

The coalition of customized quality, reliability and innovation results in tangible benefits for our customers.

Every customer, every product, every time.

## CABINETS

- IVFtech Sterica
- IVFtech Classica
- IVFtech Javica
- IVFtech Unica
- IVFtech Econica

## APPLIANCES FOR CABINETS

- Appliances for backwall in Sterica cabinets
- Appliances for tabletop in Sterica cabinets
- Appliances for Classica, Javica and Unica

## ACCESSORIES AND EQUIPMENT

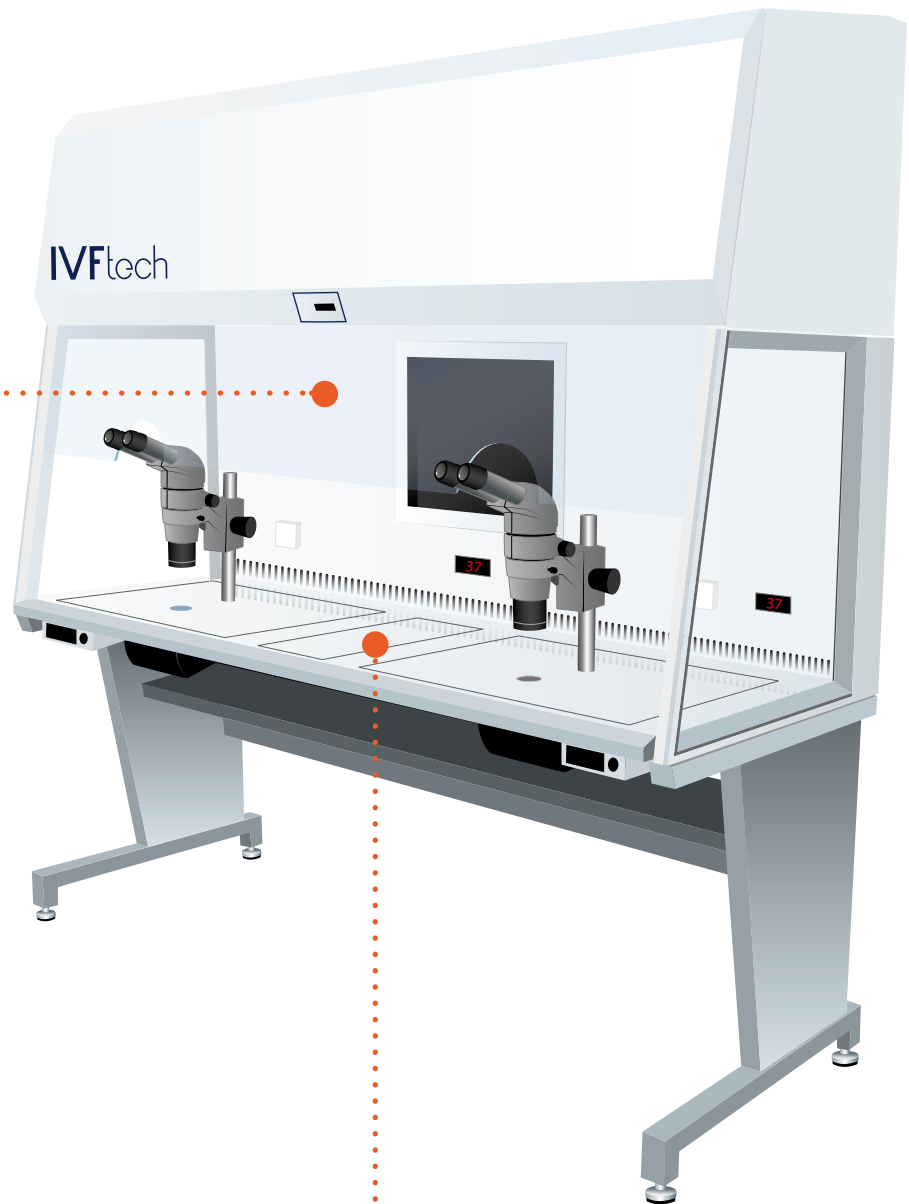
- Warming blocks
- Hot plate
- Tube warmer
- Incubator
- Gas mixer

## TABLES

- Anti-vibration table
- Z-table
- I-table
- IVFtech heated table



IVFtech



Options for  
backwall  
see page 14-15

Options for  
table top  
see page 16-17

## CABINETS

# IVFtech STERICA CABINET

IVFtech Sterica cabinets are designed to protect the samples with a constant laminar vertical flow of clean air in the entire working area. IVFtech Sterica quality cabinets are made to meet the specific requirements of IVF Laboratories all over the world.

We have developed our expertise over 20-years and are able to provide industry-leading uniformly distributed heated surface on tabletop.

All major brands of microscopes can be integrated.

The low speed of the fan ensures longer life of the HEPA filters and fan, and saves energy while creating less turbulence around the microscope.

The Laminator and diffuser ensures uniform airflow, and allows for more balanced air through lower speed.

The IVFtech Sterica cabinets can be customized with many different options, and provides a flexible back bone of any IVF laboratory. The cabinets comes in four sizes, with or without height adjustable stands.

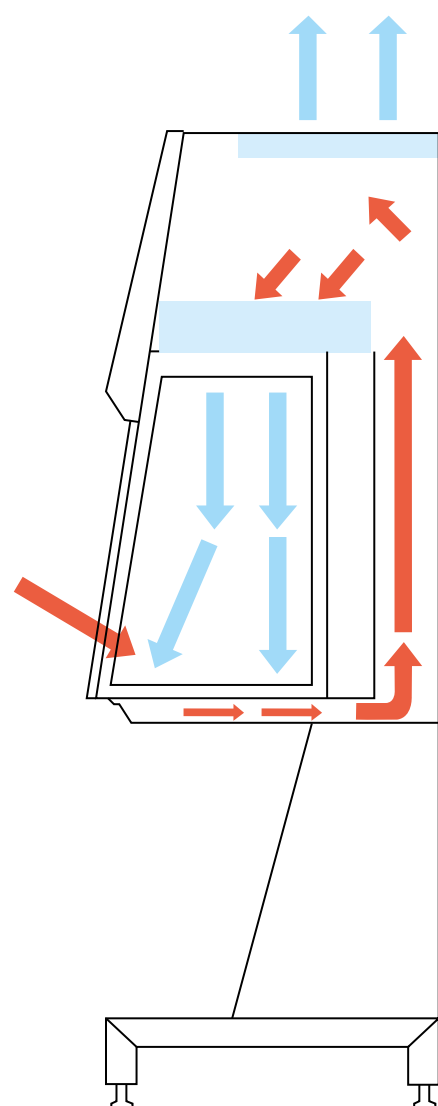
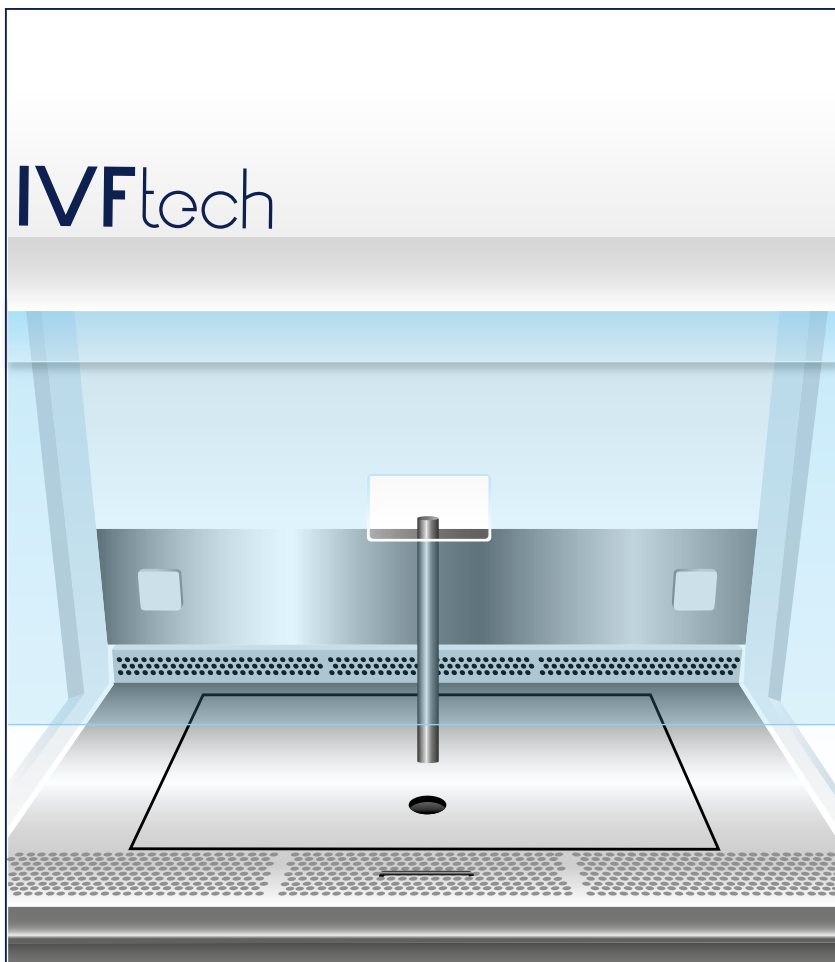
HiMacs or Stainless steel:

The Hi-Macs® table tops provides an excellent alternative to Stainless Steel. The Hi-Macs® surface is stain resistant and easy clean. Hi-Macs® is highly scratch resistant compared to stainless steel. Furthermore the Hi-Macs® surface can be refurbished and repolished if needed. It is easy to see the writing on the dish when working on the Hi-Macs® surface.



### Advantages:

- User friendly interface
- Easy to service
- Easy to clean
- Slope front for ergonomic work
- Fits all major microscope brands
- More work areas in less space
- Effective work flow
- Adjustable fan speed
- Adjustable light intensity
- Built in timer
- Low noise level
- High degree of configurability
- Option for electrical elevation stand
- Hi-Macs or stainless steel
- 90, 120, 150, 180, 210, 240cm



Options for  
Classica  
see page 18-19

## CABINETS

### IVFtech CLASSICA

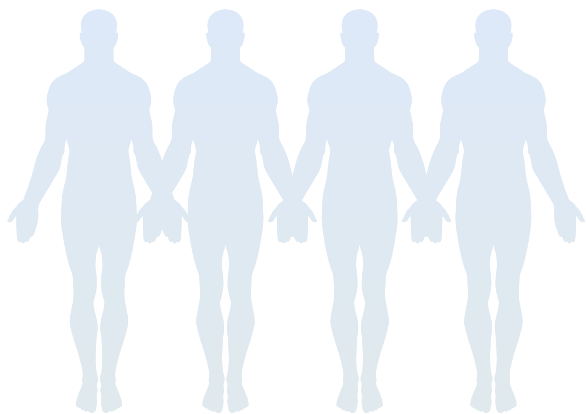
IVFtech Classica cabinets are designed to protect both the samples and the people working with the samples through recirculating air through the filter without leaving the cabinet. They are custom made to your specifications and suitable for all IVF laboratory procedures such as sperm collection, embryo scoring and transfer preparation. Cabinets are available in 4 sizes: 90, 120, 150 and 180cm, with many options to customize your cabinet further.

With control board with timer to switch on/off the fan and on/off the heated tabletop. All brands of microscope can be installed, choose between oculars through the front window or a secondary window inside the cabinet, which allows the front window to be closed.

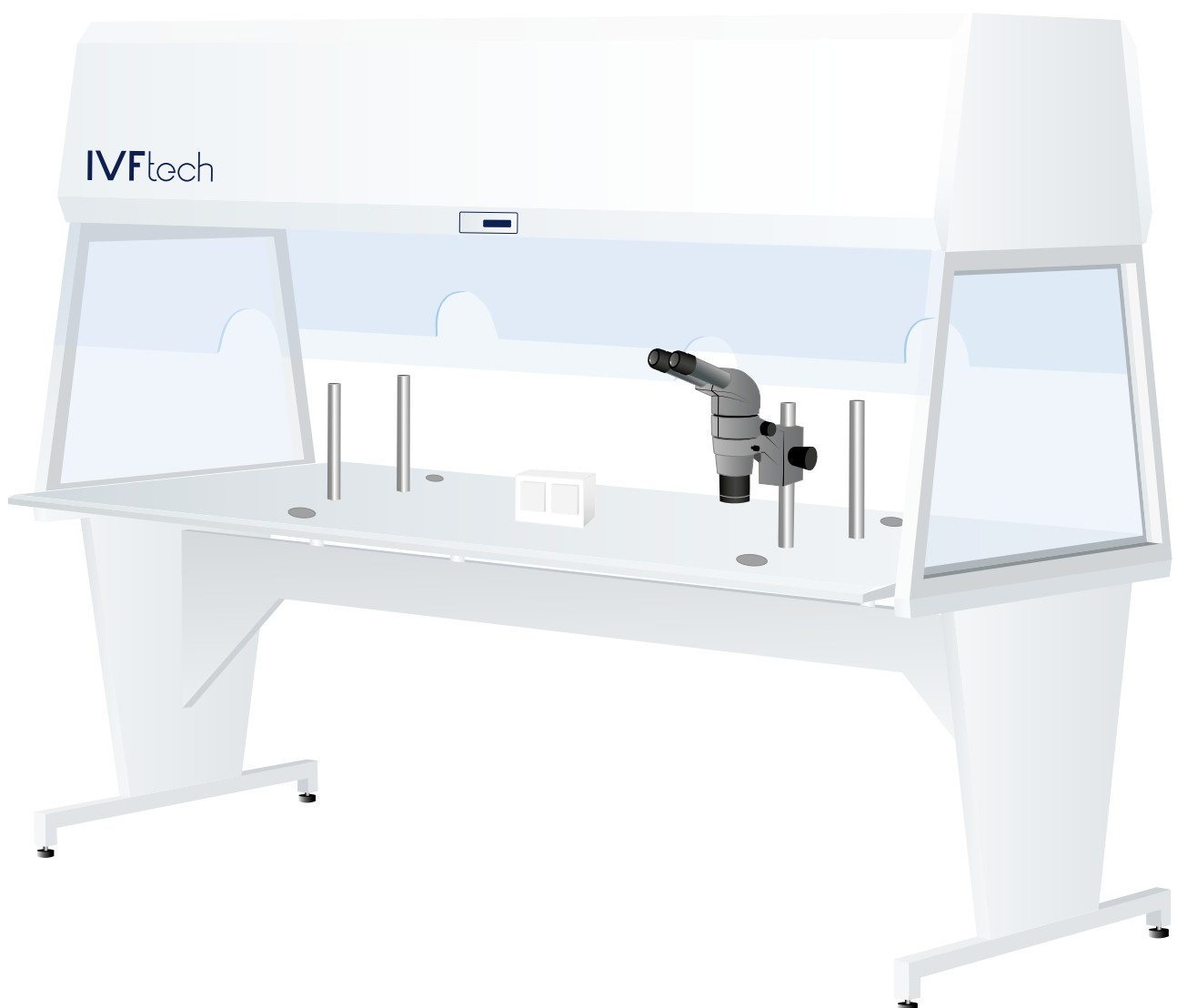
#### **Advantages:**

- User friendly interface
- Easy to service
- Easy to clean
- Slope front for ergonomic work
- Motorized window
- Split window option for ocular
- Fits all major microscope brands
- More work areas in less space
- Effective work flow
- Adjustable fan speed
- Adjustable light intensity
- Built in timer
- Low noise level
- High degree of configurability
- Option for electrical elevation stand
- Stainless steel
- 90, 120, 150, 180cm





Workplace for up to four people





# IVFtech Javica CABINET

IVFtech Javica cabinet is a double-sided cabinet which allows the embryologists to work from both sides simultaneously – providing a space saving and sociable solution. The cabinet can have up to 4 heated working areas with stereo microscopes and 2 extra small heated areas in the middle all independently controlled. Ideal for both small and larger laboratories as a peninsular or island unit.

### Filtration

Class H-14 HEPA filters in accordance with EN 1822. Filter efficiency 99.999% against 0.3 µm particle size. 99.995% in MPPS.



### Advantages:

- User friendly interface
- Easy to service
- Easy to clean
- Slope front for ergonomic work
- Fits all major microscope brands
- Space efficient solution for up to 4 people
- More work areas in less space
- Effective work flow
- Adjustable fan speed
- Adjustable light intensity
- Built in timer
- Low noise level
- High degree of configurability
- Option for electrical elevation stand
- Hi-Macs or stainless steel
- 120,180, 210, 240cm

Options for  
Javica  
see page 18-19

HiMacs:

Table top Hi-MACS

The surface of the table comes in Hi-MACS, which is natural minerals blended with pure acrylic resin to form a solid durable material. It is available in many different colours.

It is easy to clean, hygienic and does not absorb liquids or odours. Clean with soapy water or use an abrasive cleanser and a green Scotch-Brite pad. Easy to see the writing on the dish when working on the Hi-Macs® surface.

The IVFtech UNICA is a semi closed system.

A careful gamete and embryos manipulation has always been a key element of laboratory embryology and has contributed substantially to the success of many assisted reproduction procedures.

Suboptimal in vitro conditions may both distress the competence to develop in vitro and lead to irreversible long-term alterations in the characteristics of the foetal and post natal growth. Therefore caution should be taken in the handling and manipulation of the oocytes and early embryos in order to achieve a stable biological optimal atmosphere, which creates optimal conditions for embryo growth.

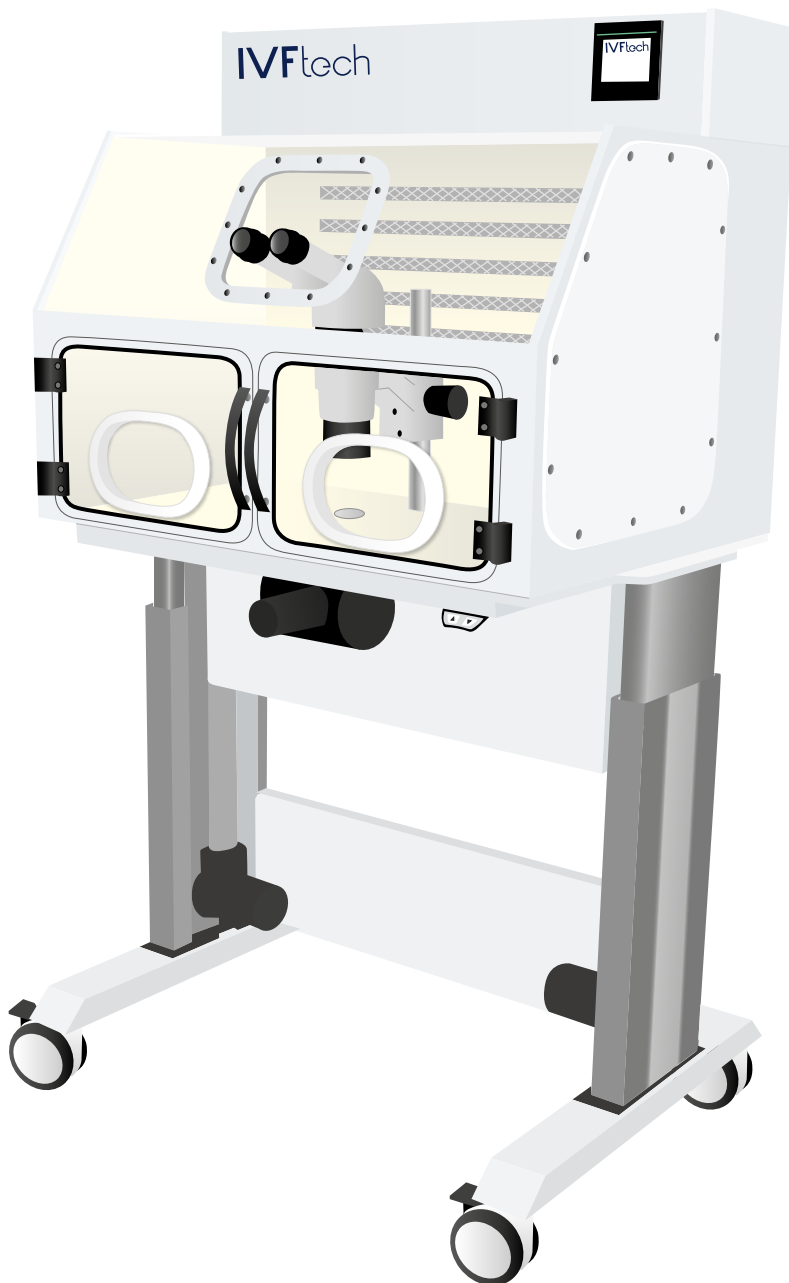
The employment of IVF controlled-atmosphere workstation has been proposed in order to meet the special requirements of oocyte and embryo handling during IVF daily routine.

This self-contained chamber reproduces the incubator conditions allowing the embryologists to perform oocytes and embryos manipulations while minimizing even slight alterations of the environmental conditions (temperature changes, gas composition, culture medium osmolality and pH) and preserving the embryo developmental potential.

Options for  
Unica  
see page 18-19

## CABINETS

### IVFtech UNICA



#### **Advantages:**

- Easy access to chamber
- Easy to service
- Easy to clean
- Slope front for ergonomic work
- Fits all major microscope brands
- Effective work flow
- Built in timer
- Low noise level
- Efficient carbon filtration
- Option for electrical elevation stand
- Hi-Macs

IVFtech Econica is a standard cabinet.

**Options:**

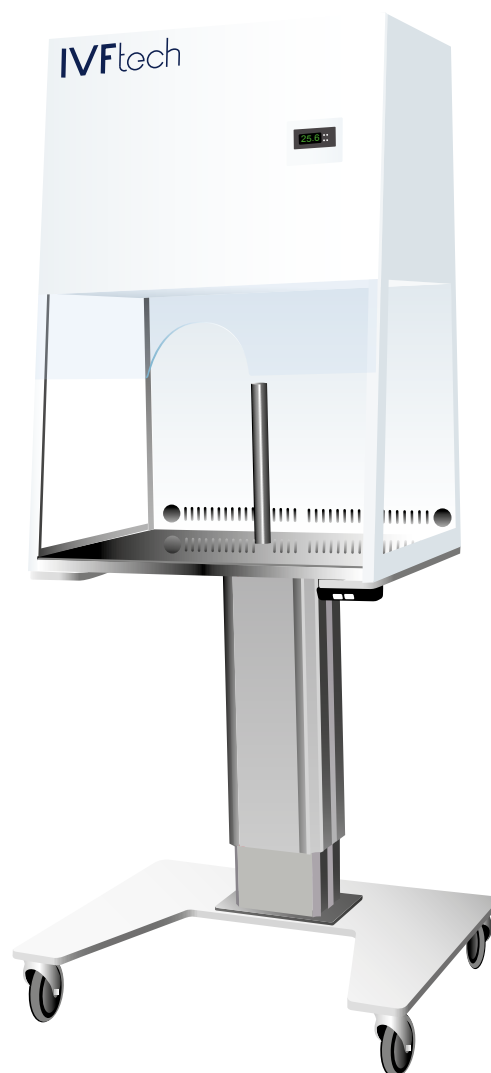
60cm is available with one full heated area and preparation for microscope or as a cold cabinet.

IVFtech Econica 60cm is available with wheels, easy to move around for use in different locations.

Like all our other cabinets IVFtech Econica can also be supplied with adjustable electrical stand or fixed stand.

**Features:**

- User friendly interface
- Easy to clean
- Slope front for ergonomic work
- Fits all major microscope brands
- Fixed fan speed
- Fixed light intensity
- Cold or heated surface, one size heating mat
- Option for electrical elevation stand
- Stainless steel



## CABINETS

# IVFtech Econica

IVFtech Econica is a standard cabinet.

### Options:

120cm is available with one standard heated area and preparation for microscope or as a cold cabinet.

IVFtech Econica 120cm is available with a fixed stand.



### Features:

- User friendly interface
- Easy to clean
- Slope front for ergonomic work
- Fits all major microscope brands
- Fixed fan speed
- Fixed light intensity
- Cold or heated surface, one size heating mat
- Stainless steel

Holes for cables  
Ø 30 mm  
Ø 60 mm



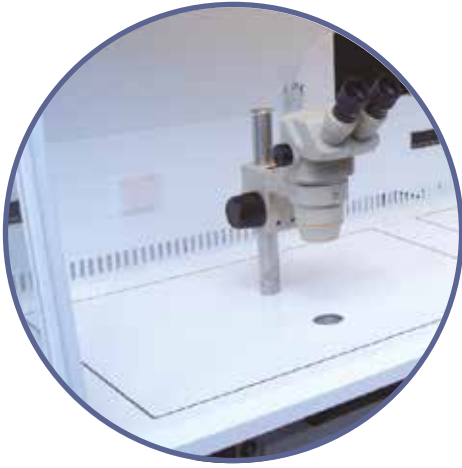
Built in incubator



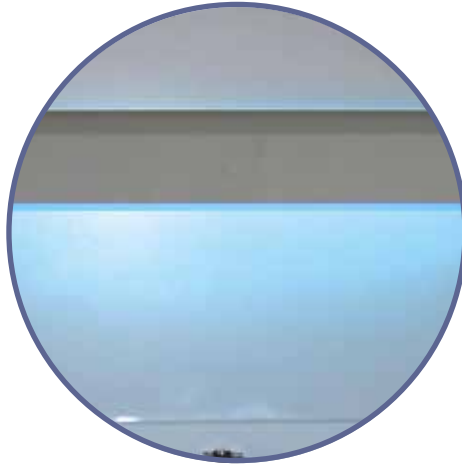
Monitor



Tunnel



Microscope and heated area



UV

## APPLIANCES FOR CABINETS

### APPLIANCES FOR BACKWALL IN STERICA CABINETS



Flow meter

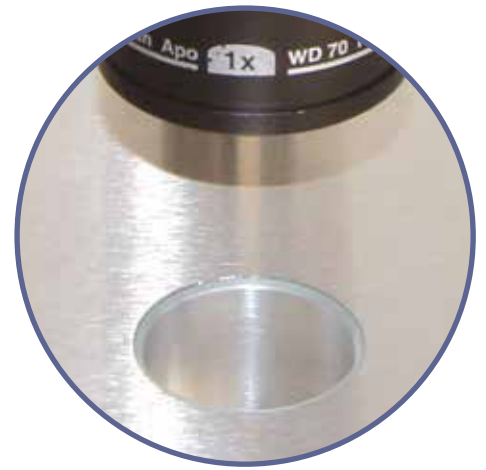


Humidifier

Box for ICSI  
Microscope



Incubator



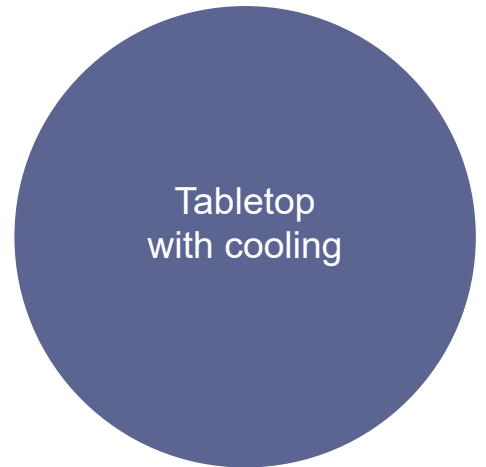
Heated glass



Extra heated area



Microscope



Tabletop  
with cooling





Warming block

## APPLIANCES FOR CABINETS

### APPLIANCES FOR TABLETOP IN STERICA CABINETS



ICSI

Pull out  
shelf and drawer



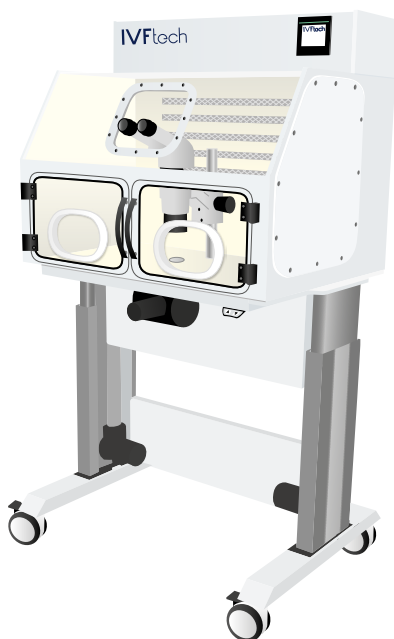
- Monitor outside
- Heated glass
- Incubator in tabletop
- Flow meter



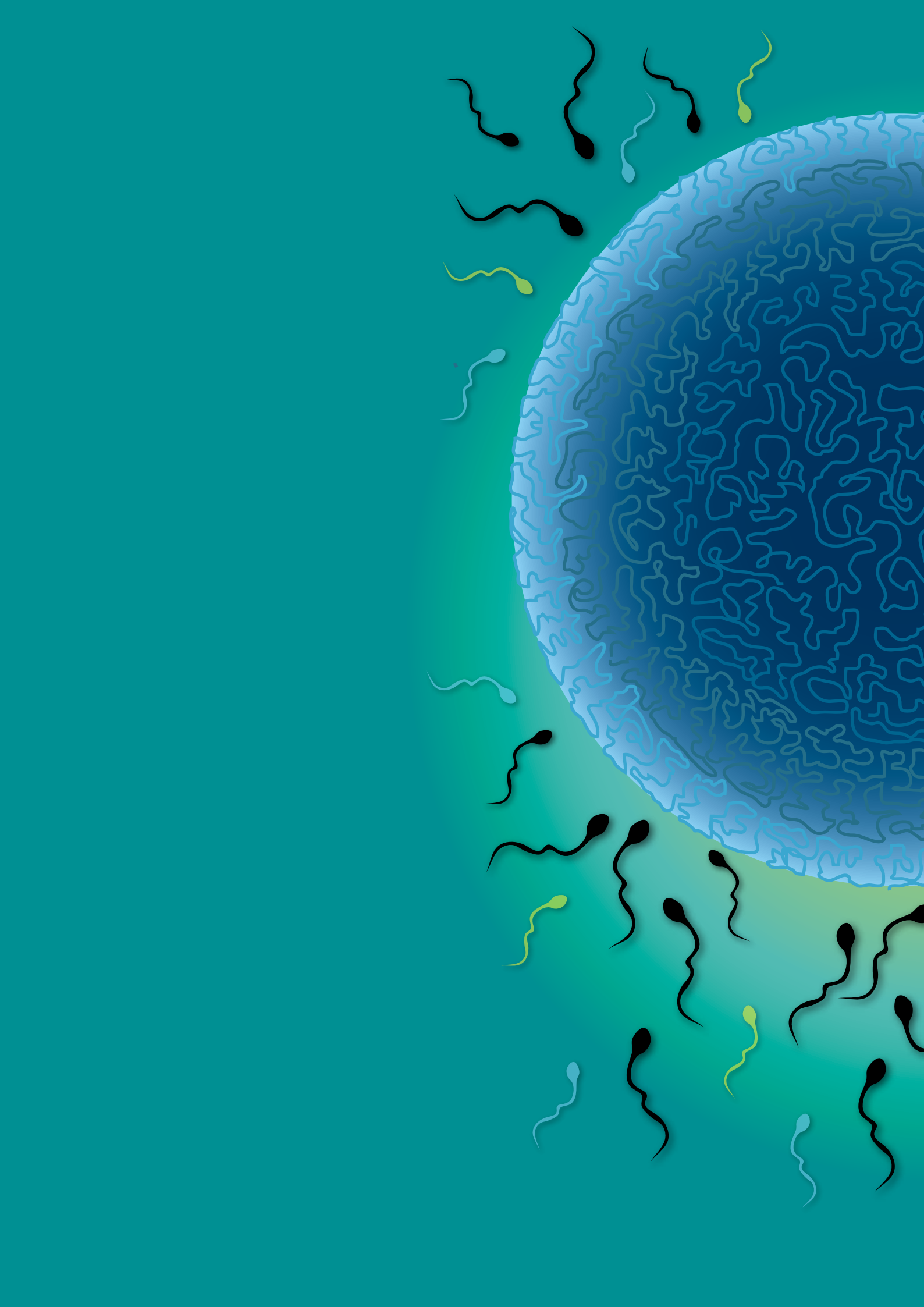
- Monitor inside
- Incubator in tabletop
- Electrical outlet
- Heated glass
- Extra heated area
- Flow meter
- ICSI

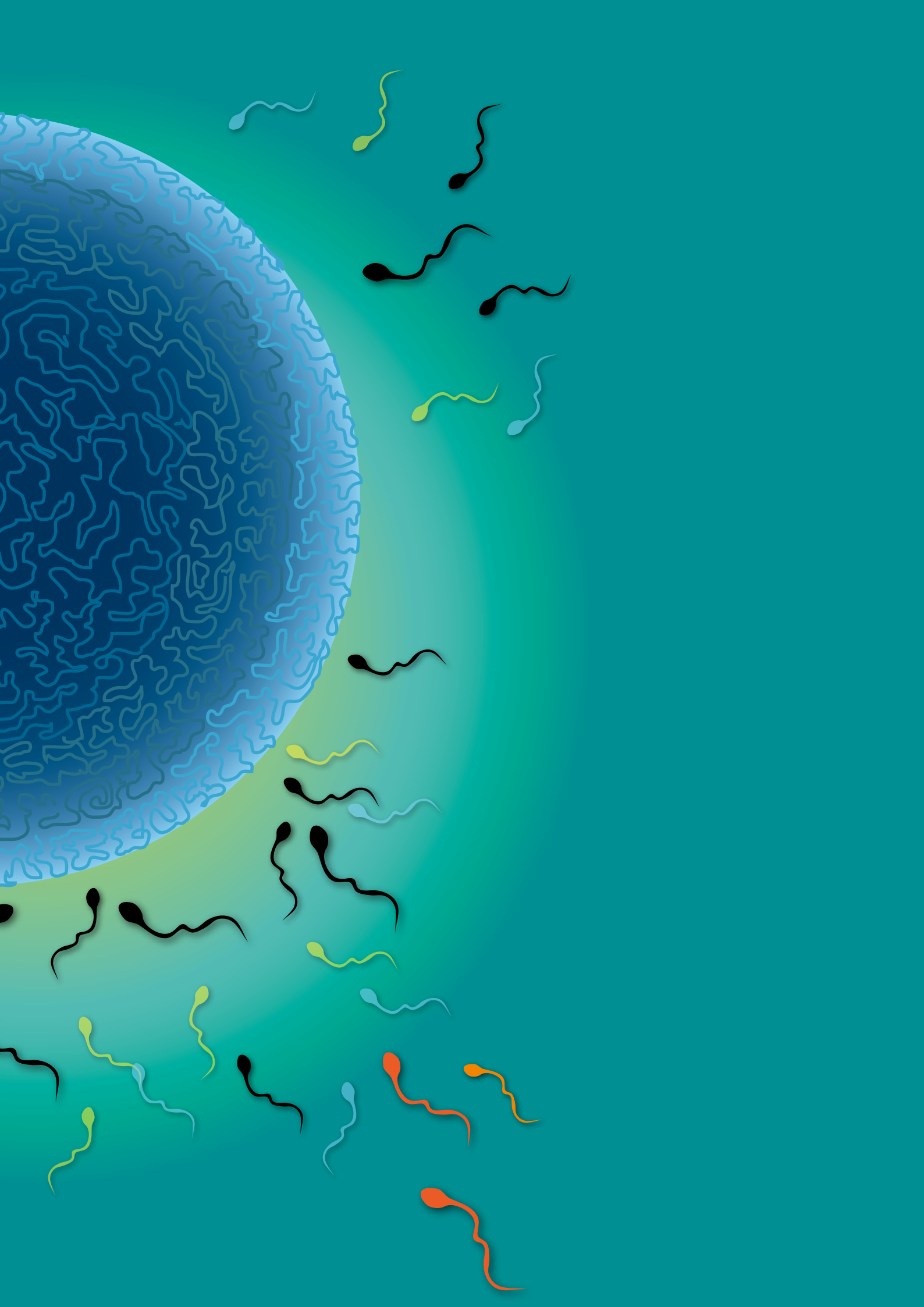
## APPLIANCES FOR CABINETS

### APPLIANCES FOR CLASSICA, JAVICA AND UNICA



- Bracket for gas flask
- Side doors
- Iris port
- Electrical outlet
- Fix stand
- Electrical elevation stand
- Hand access port (standard)







Gas bubble flask



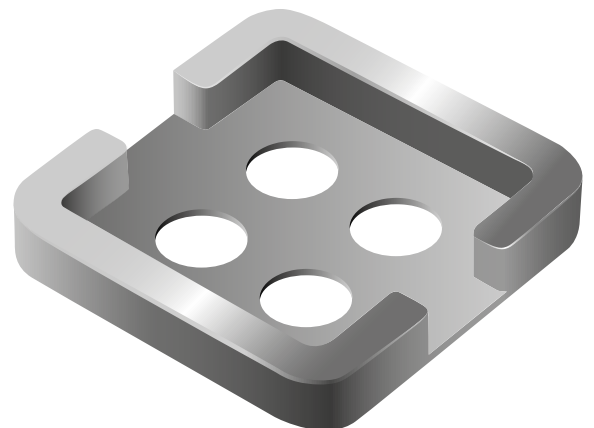
Media flask



10 and 20 ml syringe



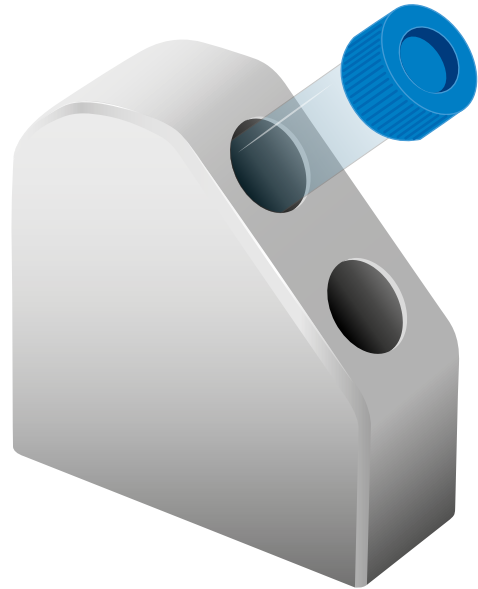
Glass hood



4 well dish



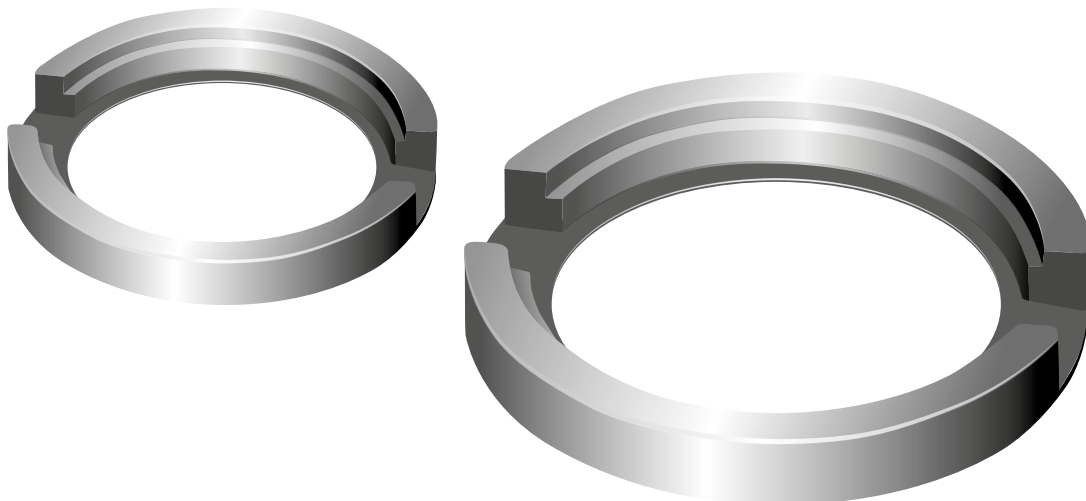
6 and 14 ml tubes



14 ml tubes

## ACCESSORIES AND EQUIPMENT

### ACCESSORIES



35, 60 and 80 mm dish



## Hotplate

The IVFtech Hotplate is the perfect solution for the IVF-lab that is in need of an extra heated workspaces, without the need for an extra workbench. The Hotplate provides a uniform self-contained tabletop for handling of warming block, Mini-incubators, tubes etc and due to its size, it can be used as a portable for various placement around the IVFlab.

The IVFtech Hotplate features our easy to clean, no stain HI-MACS® finish and excellent temperature control of from ambient to 50°C with an accuracy  $\pm 0.5^{\circ}\text{C}$  throughout the working surface.





Tube warmer

## ACCESSORIES AND EQUIPMENT

IVFtech tubewarmer fits 12 test tubes 14ml.

Temperature easy to change.

Removeable sides for easy cleaning.

Aluminium block covers 2/3 of the tube which gives better uniform heat to the tubes.

Dimensions (cm): W:10 D:20 H:13,5

Heater power: 40W

Setpoint: Ambient to 50° C  
(higher on request)

### **Battery option:**

- More than 2 hours of working time on a full charge cycle
- Alarm for low battery



## FreyGen ALF incubator

Stable and safe embryo environment

Alarm feature – including possibility of external alarm monitoring

Datalogging feature

Built-in mixing chamber with CO<sub>2</sub> and O<sub>2</sub> sensors that constantly ensures an optimal gas mixture with CO<sub>2</sub> and N<sub>2</sub> input gas – no need for premix gas

Low gas consumption

Dedicated gas sampling ports for each chamber

Clean environment ensured by HEPA & VOC filtered air stream

Very easy to replace the HEPA & VOC filter

Easy and intuitive touch screen user interface

Individual target settings for temperature and gas control

Easy offset adjustment (calibration) for temperature and gas levels

Individually heated chambers – individually heated bottom and top pads for maximum temperature stability



2, 4 or 6 chamber options

## ACCESSORIES AND EQUIPMENT

### FREYGEN ALF

Removable lids for ease of cleaning

Chambers are independently gas supplied to avoid contamination between chambers

Easy locking system

The digital lid displays both lid and chamber temperature and can display patients details

Each chamber can accommodate 4 (60mm) Dishes or 8 (35mm) Mini Dishes and 4 (4 well) dishes. The trays/inserts can accommodate all major dish brands.

Medical grade sealing of each chamber protects the samples

Effortless cleaning due to advanced surface treatment of chambers – this ensures a spotless working environment

Low steady state power consumption

Preparation for external pH monitoring (optional)

Removeable trays/inserts for transportation and ease of cleaning.



Gasmixer front

**Key Features:**

Economical alternative to pre mixed gas

Unique graphical user interface with touch display

Option for controlling the unit from existing flow hood with built in incubator

Easy access at the front to HEPA+VOC filter

Available for CO<sub>2</sub> only or for CO<sub>2</sub> and O<sub>2</sub> management

Circulation pump for optimal mix and distribution of gas, adjustable speed

Colorcoded alarms for any deviation from safety conditions and set point parameters

Designed for convenient cleaning

Can be used for 1 - 4 individual incubators



Gasmixer back

## ACCESSORIES AND EQUIPMENT

### GASMIXER

The IVFtech Gasmixer was created to provide an economical alternative for pre-mixed gas used in laboratories. The use of a large mixing chamber inside the mixer ensures precise CO<sub>2</sub> (and O<sub>2</sub>) levels thereby providing a freedom of choice regarding culture media.

The Gasmixer may be used as a controlling unit for one or several small incubators built into a flow hood, in which case a graphical user interface is available at the front of the unit. In this way, it is possible to control the temperature of the individual chambers of the incubators from the display of the Gasmixer. The Gasmixer can be retrofitted into existing IVFtech flow hoods with built in incubators. In this scenario the Gasmixer will be controlled from the display of the flow hood.

The IVFtech Gasmixer uses a high efficiency HEPA+VOC filter, that is tested and manufactured according to cGMP and ISO 9001, to capture particle contaminants from the atmosphere surrounding the work environment.

**Anti-vibration table passive:**

- Spring-loaded damper mechanism
- Constant damping



Anti-vibration table passive

The IVFtech anti-vibration tables are designed primarily for ICSI procedures but all tables are designed to meet the requirements for all models of inverted microscopes and can therefore be used for all applications where vibration dampening is crucial.



**Anti-vibration table active:**

- Active Electro Mechanical Vibration Isolation System
- Highly Damped Step Response
- Active Vibration Control Bandwidth 0.5Hz – 100Hz
- Excellent position stability with low susceptibility to external noise
- Microprocessor controlled algorithms
- Variable damping technology
- Monitoring capability on a PC for real time measurements of the system plus surroundings
- Ethernet network connection used for PC connectivity
- Self-test at power up

Anti-vibration table active

## TABLES

### ANTIVIBRATION

A lightweight and compact vibration absorption systems allows to significantly reduce unwanted vibrations translated to working environment from environmental noise : People walking, Doors Closing, Outside Traffic, etc.

IVFtech AV significantly absorb vibrations and disturbances for Inverted Microscopes.

**Advantages:**

- Ergonomic design
- Heated table top
- Option for heated drawer
- Hi-macs or stainless steel

**Battery table advantages:**

- Ergonomic design
- Heated table top
- Full flexibility to work without A/C power
- 230v / 180w outlets for equipment
- More than 8 hours working time with table heating alone
- More than 6 hours working time with 2 tube warmers attached
- Option for heated drawer
- Hi-macs or stainless steel

Z-table with and without battery

The IVFtech Z tables are designed for use in the operating theater when doing oocyte retrieval. It has a clean smooth heated surface ideal for any warming blocks and media flasks. The draw can be used for storage or the draw can also be heated for heating the tools.

The IVFtech uniformed heated Z tables comes in a wide range of variations.





I-table

## TABLES

### Z-TABLE AND I-TABLE



The Heated table tops are for clean room or laboratory.

Electrical heated area

High precision temperature control makes sure to reach a high success rate for the embryo. The heating table plate is controlled by high precision PID regulator,

Heated table



**Features:**

- Sizes are available in: 90, 120, 150 and 180cm
- Heights are in: 800-850mm
- Easy to use
- Easy to clean

Heated table

TABLES

IVFtech HEATED TABLE



Klintehøj Vænge 3  
DK - 3460 Birkerød

Phone + 45 39 40 25 65  
Fax + 45 39 40 25 64  
[www.ivftech.dk](http://www.ivftech.dk)  
E-mail: [info@ivftech.dk](mailto:info@ivftech.dk)